

Hipster

Hipster, a collection with a strong industrial influence, where concrete and metal take center stage. Created to recreate the feel of industrial areas, with the warmth and smoothness of ceramics.

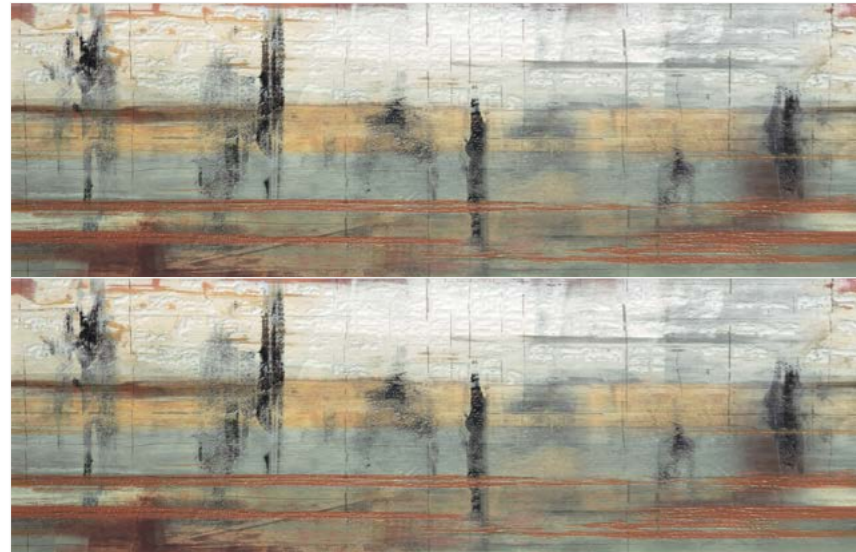


Hipster Impressions 11.8"x35.4"

Hipster

Ceramic Wall

10mm  **11.8"x35.4"**
30x90 cm



Impressions



11.8"x35.4"
187320N

Technical Specifications

CHARACTERISTICS	STANDARD	DECLARED ASTM
Dimensions	ISO 10545-2	± 0.5%
Water Absorption	ISO 10545-3	E >10%
Flatness	ISO 10545-2	± 0.5%
Crazing Resistance	ISO 10545-11	Accomplish
Breaking Strength	ISO 10545-4:9	>=125 lbf
Frost Resistance	ISO 10545-12	N/A
Resistance to Thermal Shock	ISO 10545-9	Accomplish

Packaging Information

Size	SF per carton	PC per carton	BX per pallet
11.8"x35.4"	39.83	4	22